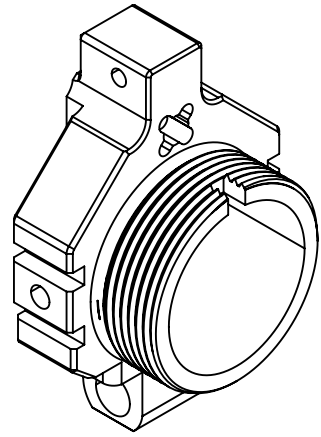
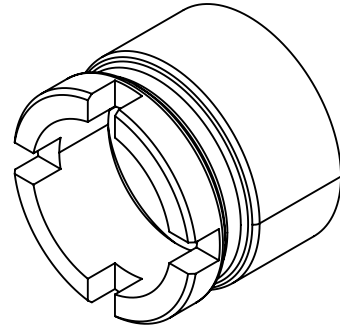


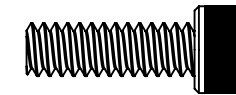
1. TRUNNION



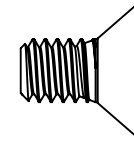
2. BARREL NUT



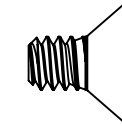
5. 6-32 CAP SCREW
3/8IN LENGTH (14PCS)



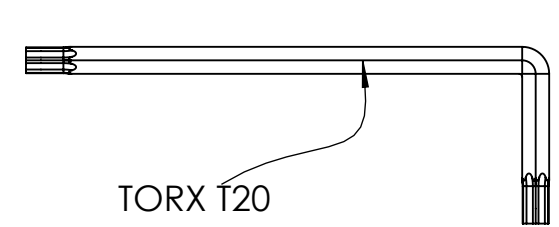
6. 8-32 FLAT HEAD
SCREW 3/8IN LENGTH
(2PCS)



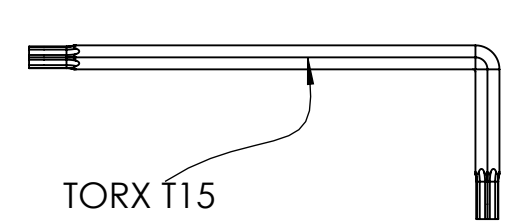
7. 6-32 FLAT HEAD
SCREW 1/4IN LENGTH
(2PCS)



7/64 (0.109IN) ALLEN WRENCH

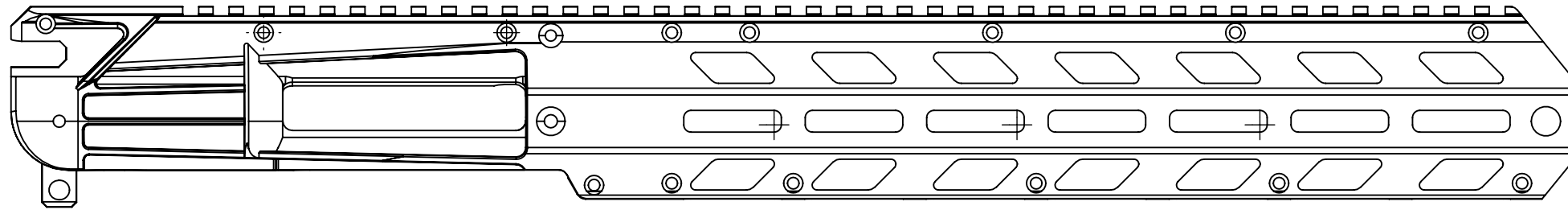


TORX T20

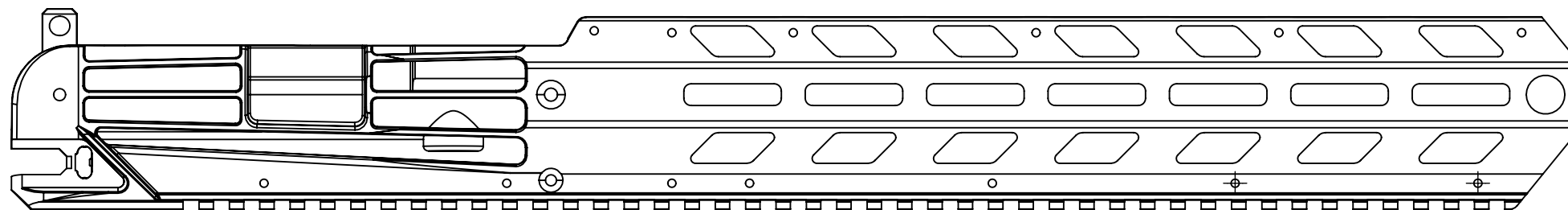


TORX T15

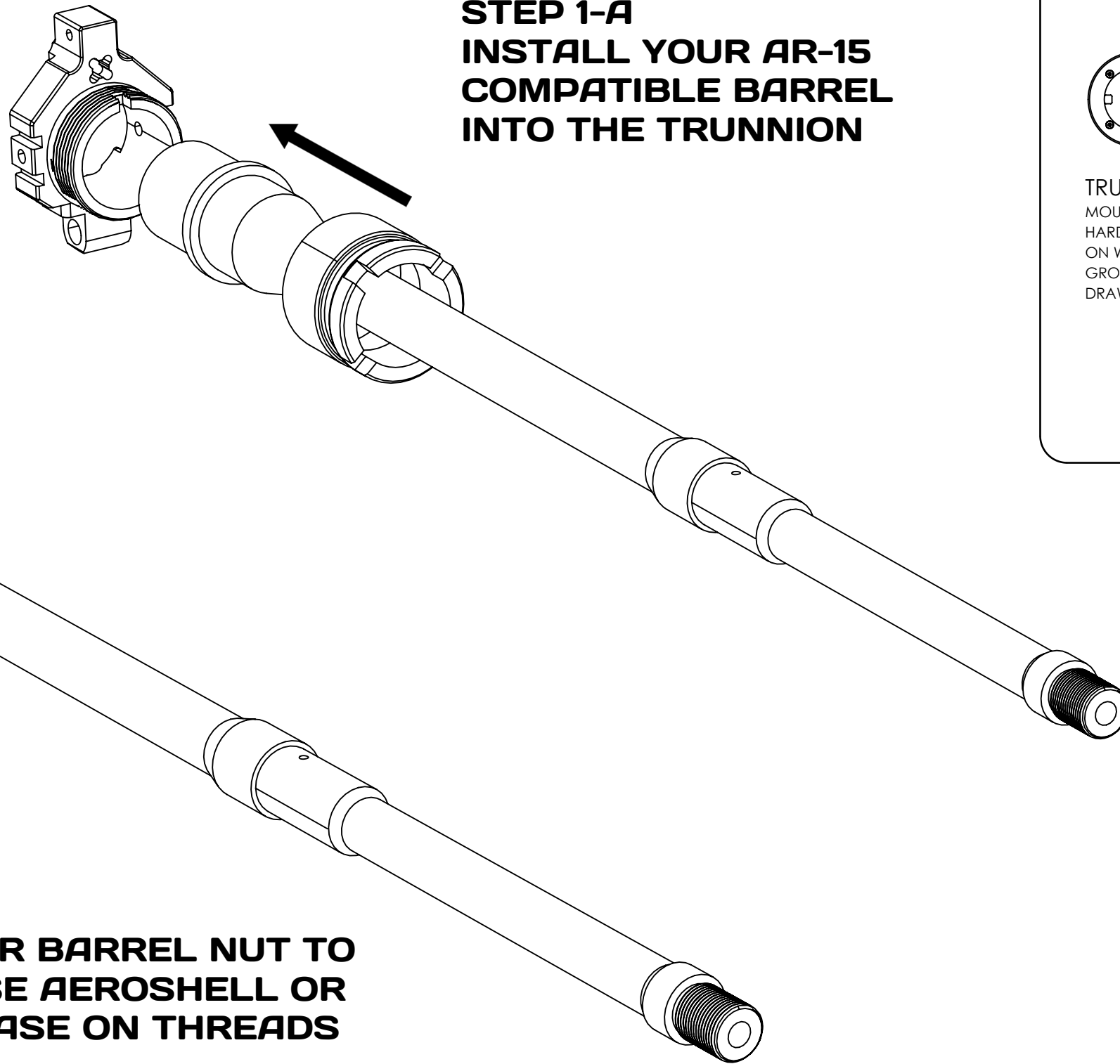
3. HOUSING HALF RIGHT



4. HOUSING HALF RIGHT

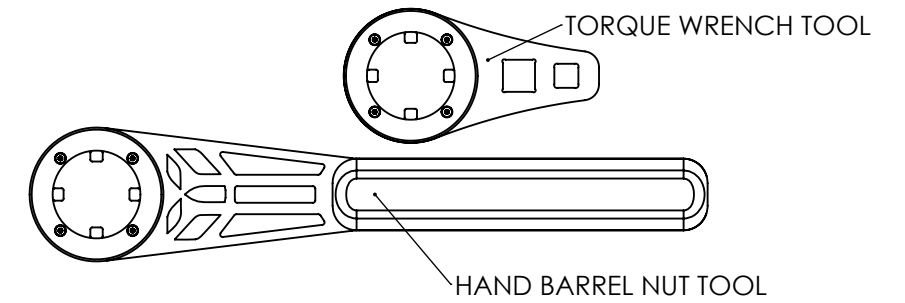


**STEP 1-A
INSTALL YOUR AR-15
COMPATIBLE BARREL
INTO THE TRUNNION**



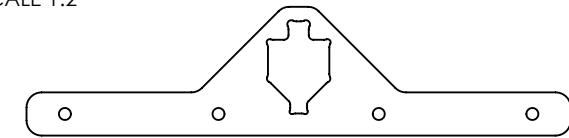
**STEP 1-B
INSTALL YOUR BARREL NUT TO
40FT LBS, USE AEROSHELL OR
SIMILAR GREASE ON THREADS**

OPTIONAL TOOLS



TRUNNION WRENCH

MOUNTS TO TABLE WITH CLAMP OR 1/4IN
HARDWARE, ALTERNATIVELY IT CAN BE STEPPED
ON WITH YOUR FOOT AND USED AGAINST THE
GROUND. LASER CUT W 1/2 IN 6061
DRAWING SCALE 1:2

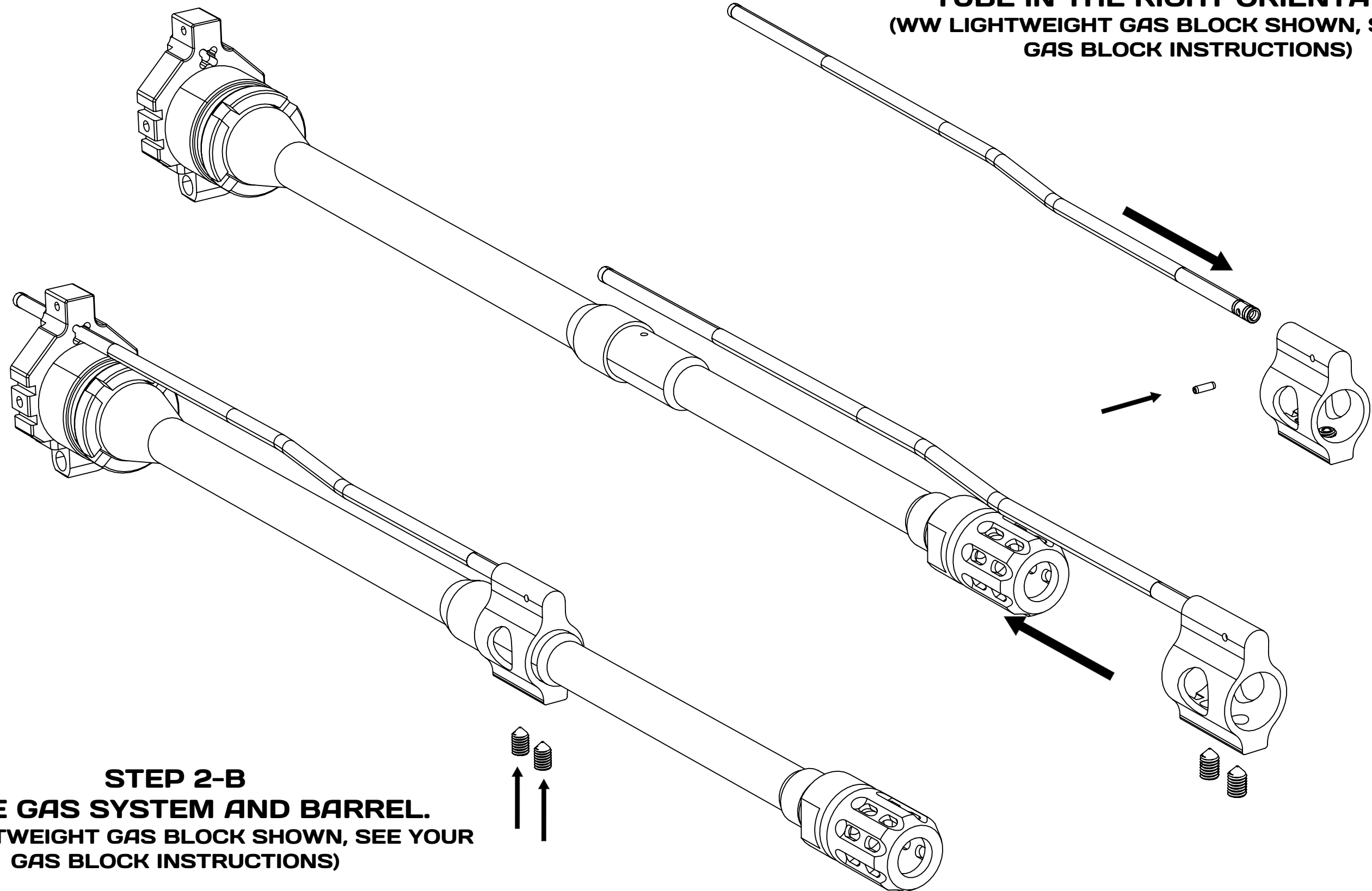


TOOL FILES



MANUAL DOWNLOAD

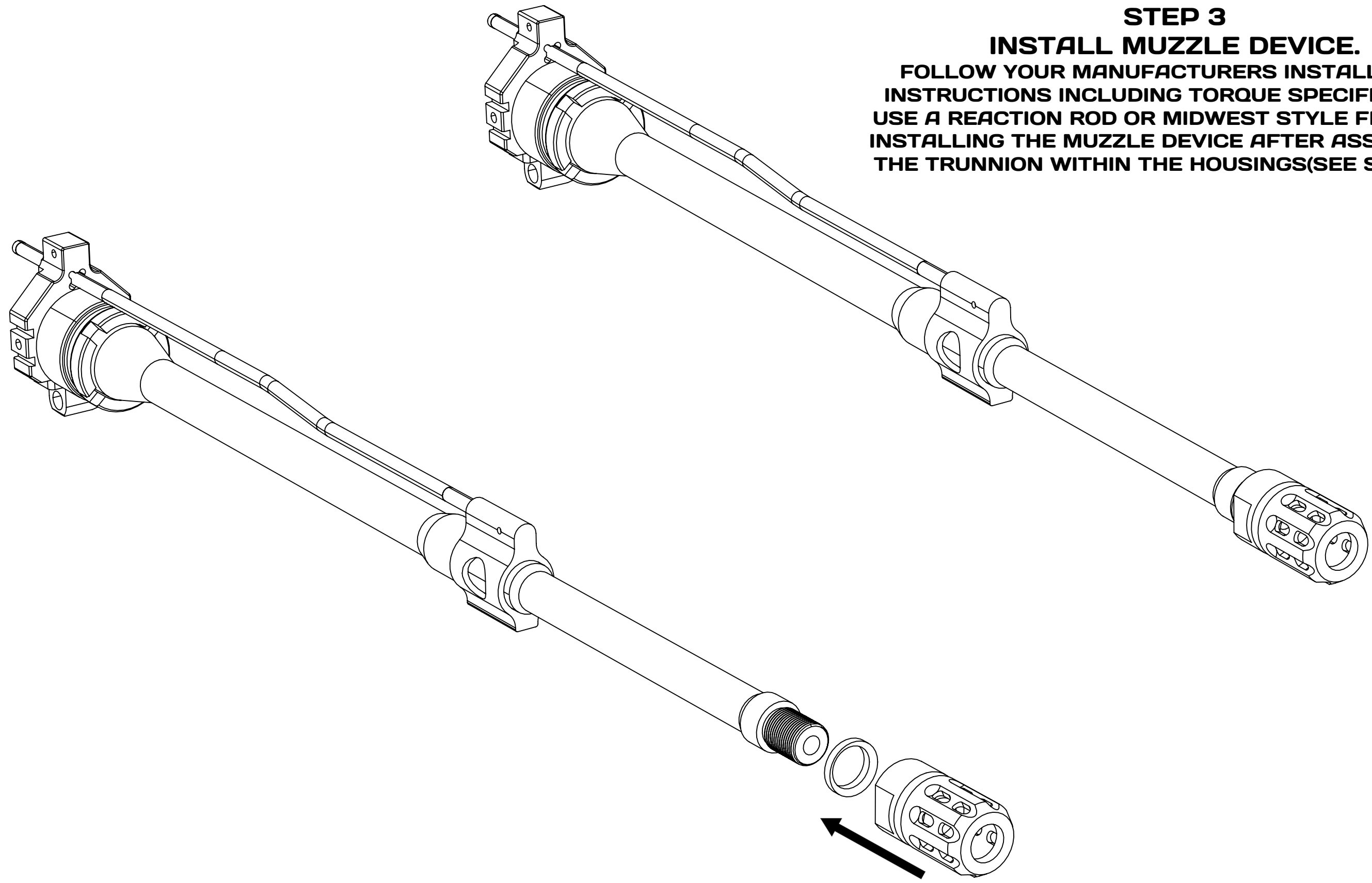
STEP 2-A
MATE GAS TUBE AND GAS BLOCK BY
INSTALLING THE PIN WITH THE GAS
TUBE IN THE RIGHT ORIENTATION
(WW LIGHTWEIGHT GAS BLOCK SHOWN, SEE YOUR
GAS BLOCK INSTRUCTIONS)

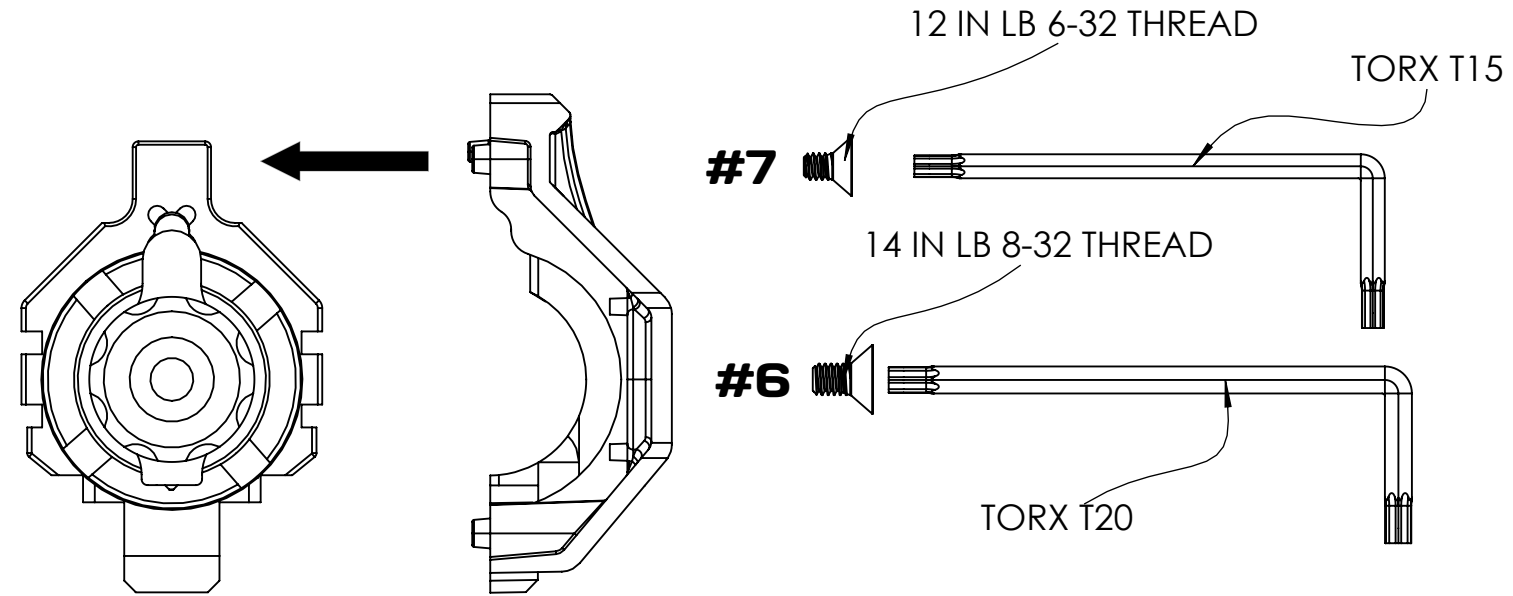


STEP 2-B
MATE GAS SYSTEM AND BARREL.
(WW LIGHTWEIGHT GAS BLOCK SHOWN, SEE YOUR
GAS BLOCK INSTRUCTIONS)

STEP 3**INSTALL MUZZLE DEVICE.**

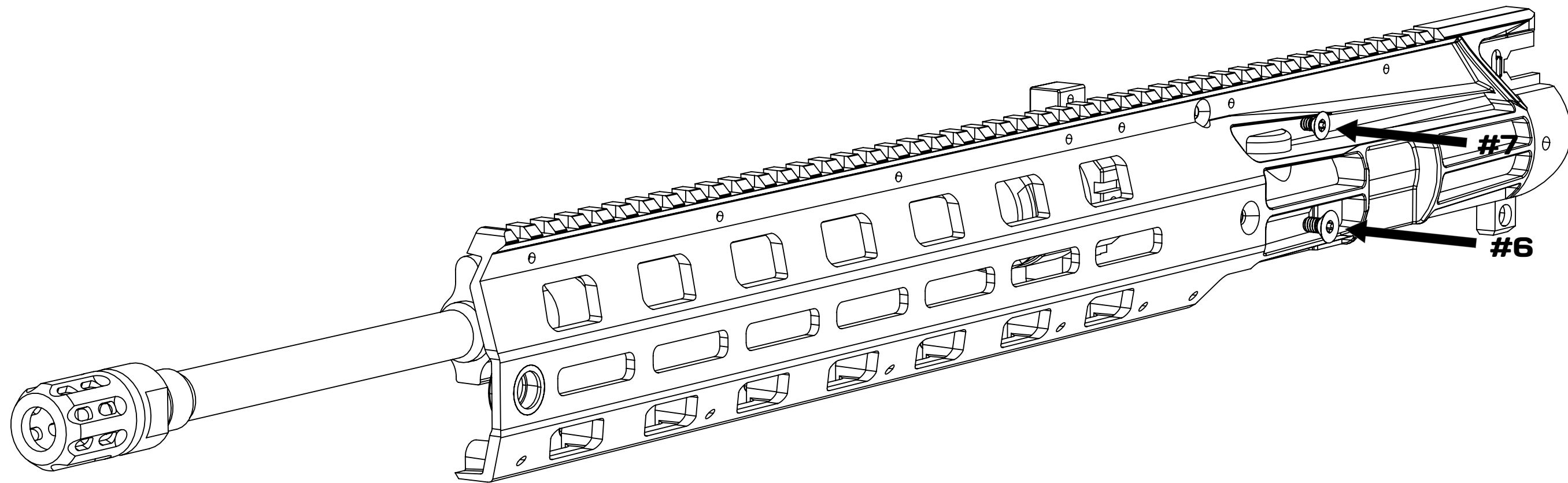
FOLLOW YOUR MANUFACTURERS INSTALLATION INSTRUCTIONS INCLUDING TORQUE SPECIFICATION. USE A REACTION ROD OR MIDWEST STYLE FIXTURE IF INSTALLING THE MUZZLE DEVICE AFTER ASSEMBLING THE TRUNNION WITHIN THE HOUSINGS(SEE STEP 4, 5)

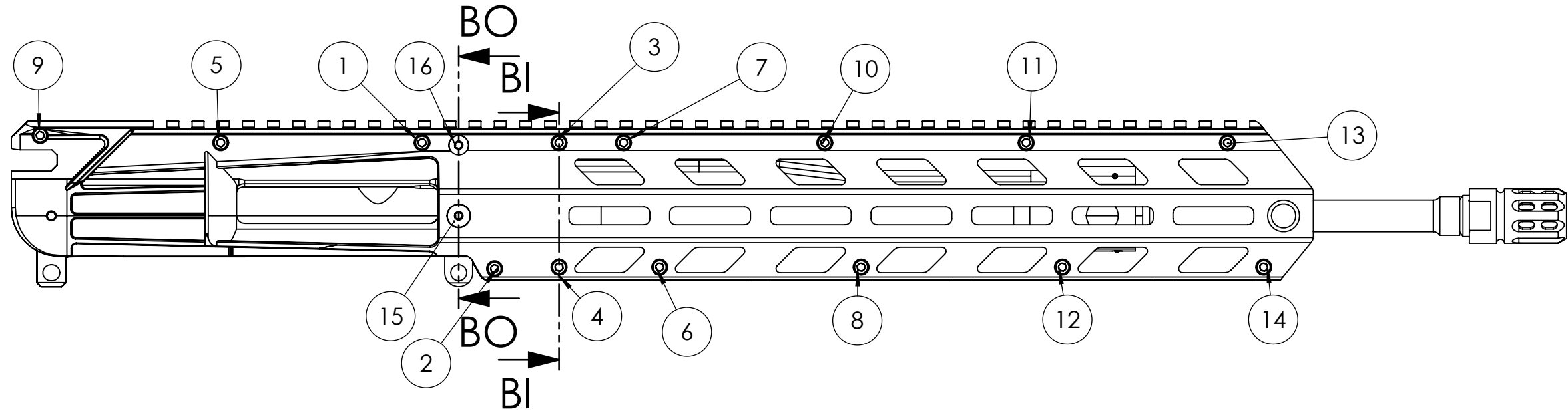




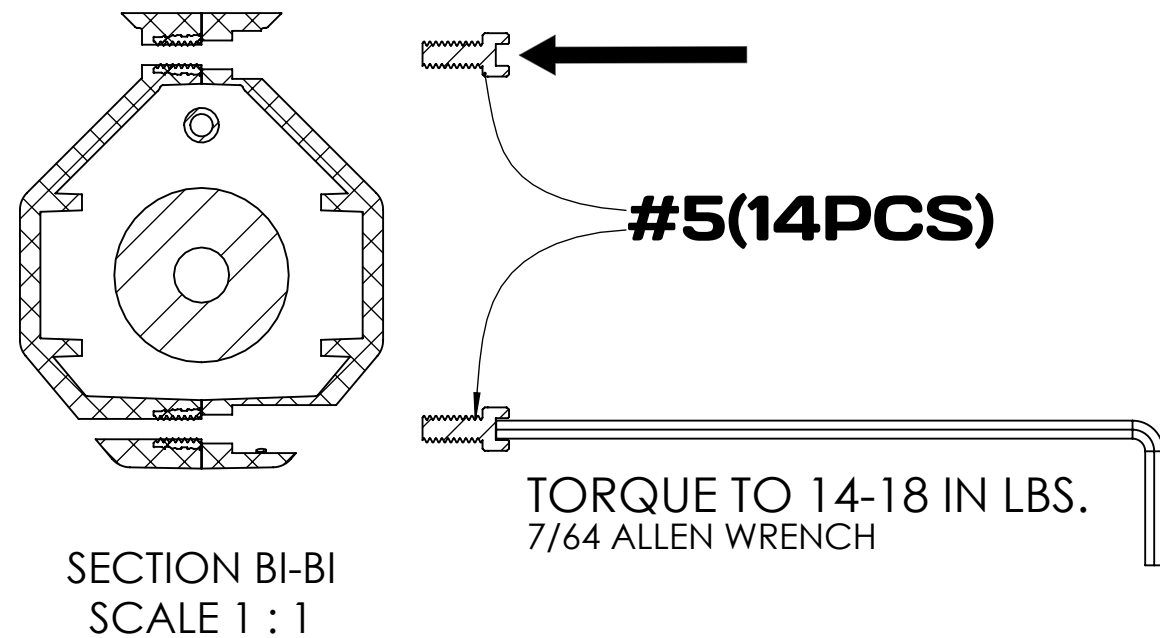
**STEP 4
INSTALL LEFT HOUSING HALF USING
SCREW 1 EACH OF SCREW #6, AND #7**

**USE THREAD LOCKER AS PER USE REQUIREMENT:
LIGHT FIRING SCHEDULE - LOCTITE 243
MODERATE FIRING SCHEDULE -LOCTITE 271
FULL AUTO/HEAVY USE- ROCKSETT**





STEP 5
INSTALL THE HOUSING #5 SCREWS (14PCS)
IN THE BELOW SEQUENCE.
DO NOT USE THREADLOCKER ON HOUSING SCREWS!



STEP 5B
INSTALL RIGHT HOUSING HALF USING
SCREW 1 EACH OF SCREW #6, AND #7

USE THREAD LOCKER AS PER USE REQUIREMENT:
LIGHT FIRING SCHEDULE - LOCTITE 243
MODERATE FIRING SCHEDULE -LOCTITE 271
FULL AUTO/HEAVY USE- ROCKSETT

