

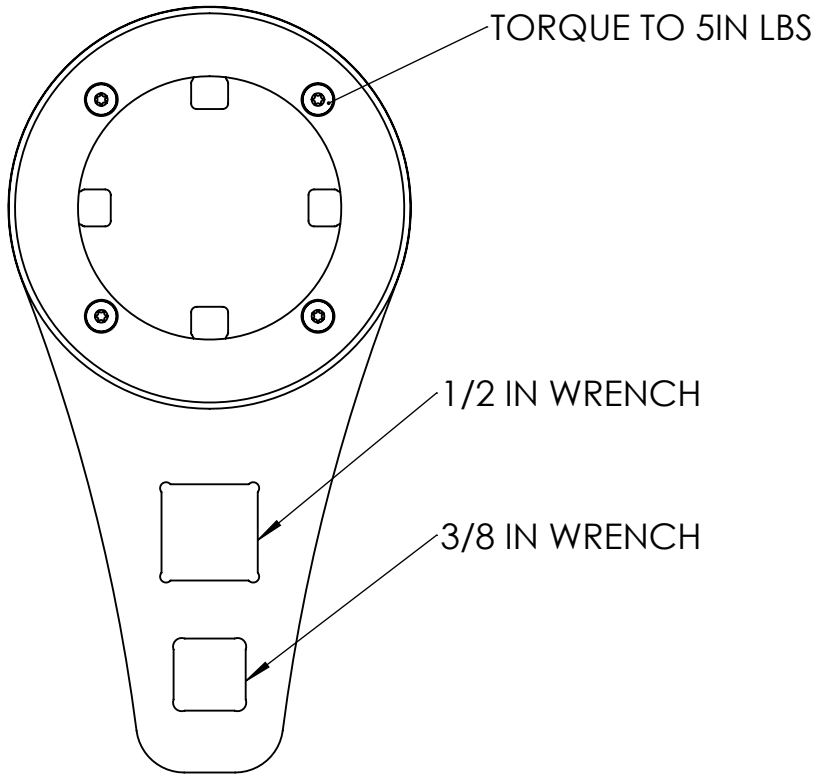
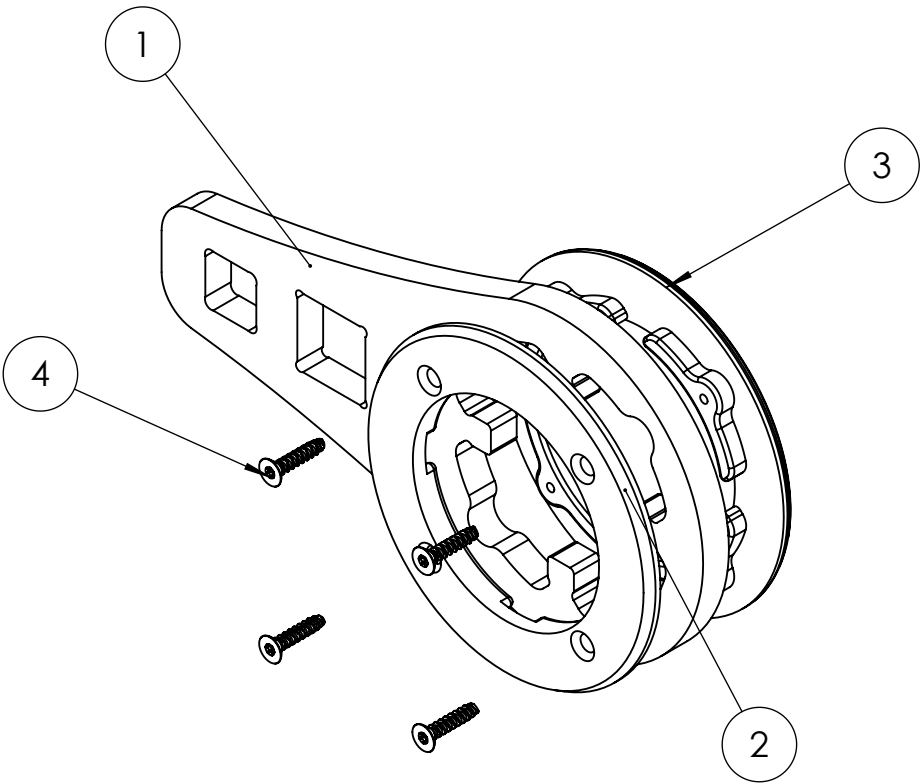
4

3

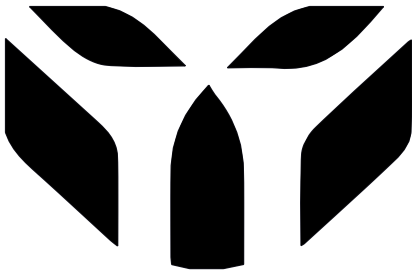
2

1

ITEM NO.	PART NUMBER	DESCRIPTION	QTY.
1	MA-16820 BARREL NUT 061119	4130 CHROMOLY STEEL LASER CUT, AND FINISH MACHINED BLACK OXIDE COATED PART	1
2	MA-16820-TOOL-BUSHINGA	3D PRINTED BUSHING A SIDE	1
3	MA-16820-TOOL-BUSHINGB	3D PRINTED BUSHING B SIDE	1
4	95893A621	Flat Head Thread-Forming Screws for Plastic	4



- NOTES:
- 3D PRINT BUSHINGS IN DURABLE TOUGH MATERIAL WITH PRECISION SETTINGS AT 100% INFILL.
  - 3D PRINT HANDLE HOWEVER YOU CHOOSE, WE PREFER TPU.
  - LASER #1 OUT OF 4130 CHROMOLY STEEL WITH PROVIDED FLAT PATTERN AT A VENDOR OF YOUR CHOOSING.
  - FILE OR DREMEL THE AREAS THAT ENGAGE THE BARREL NUT PRIOR TO AFFIXING THE BUSHINGS #2.
  - HARDWARE PART NUMBERS ARE ALL MCMASTER.COM



UNLESS OTHERWISE SPECIFIED:		NAME		DATE		WRAITHWORKS							
DIMENSIONS ARE IN INCHES TOLERANCES:		DRAWN		JG		2/07/22		TITLE:  <b>WARSCORP9/WARP15 BARREL NUT TOOL TRQ WRENCH TYPE</b>					
FRACTIONAL ±1/32 IN.		CHECKED											
ANGULAR: MACH±1 BEND ±1		ENG APPR.											
TWO PLACE DECIMAL ±0.010		MFG APPR.											
THREE PLACE DECIMAL ±0.002		Q.A.						SIZE		DWG. NO.		REV	
FOUR PLACE DECIMAL ±0.0005		COMMENTS:						B		MA-16820-TOOL		A	
INTERPRET GEOMETRIC TOLERANCING PER: 3D MODEL													
MATERIAL													
VARIES													
FINISH													
VARIES													
DO NOT SCALE DRAWING													
								SCALE: 1:1		WEIGHT:		SHEET 4 OF 12	

4

3

2

1

