

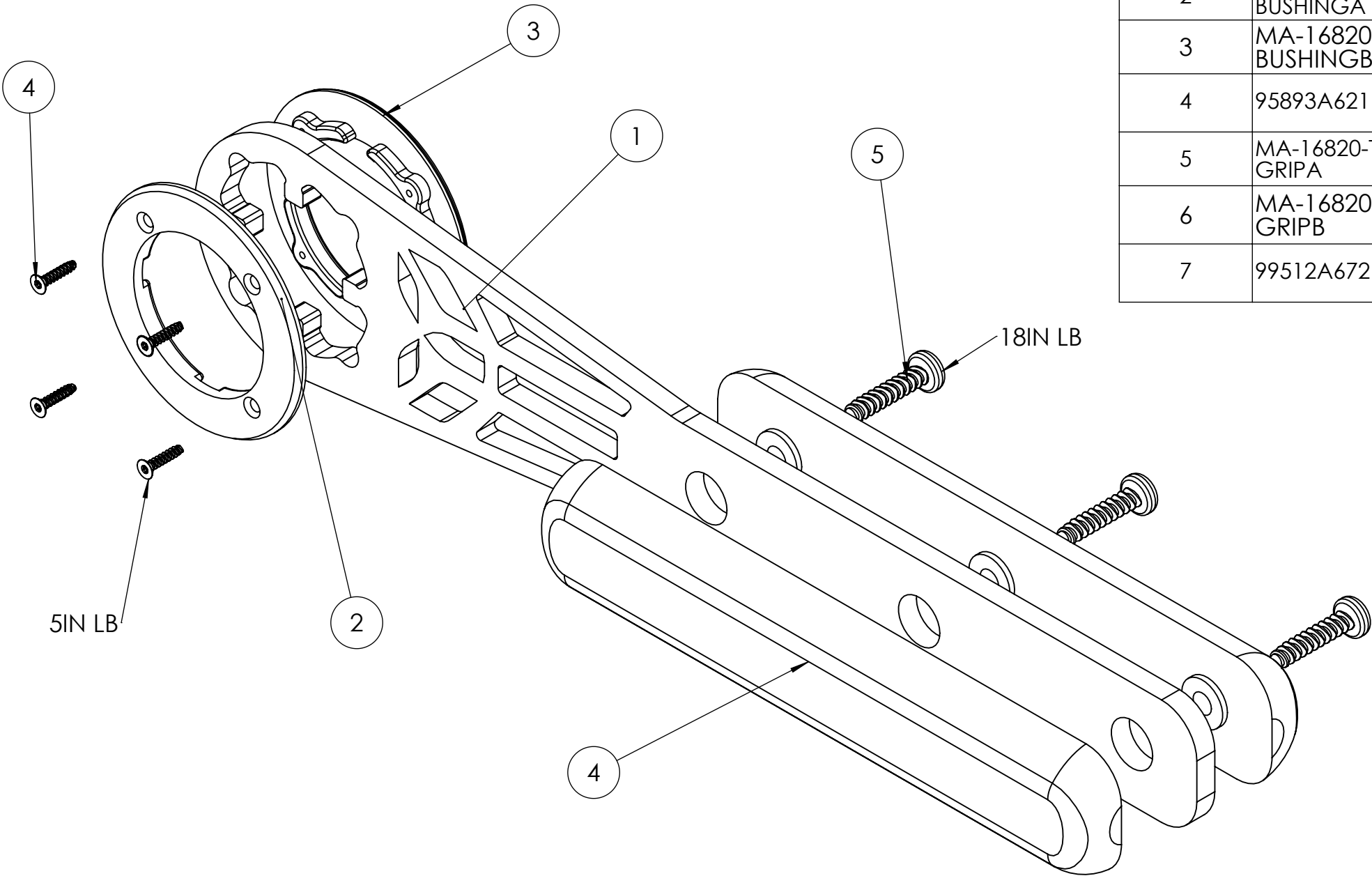
4

3

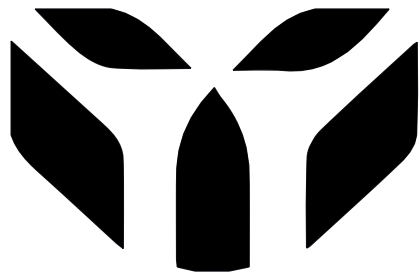
2

1

ITEM NO.	PART NUMBER	DESCRIPTION	QTY.
1	MA-16820 BARREL NUT 061119	4130 CHROMOLY STEEL LASER CUT, AND FINISH MACHINED BLACK OXIDE COATED PART	1
2	MA-16820-TOOL-BUSHINGA	3D PRINTED BUSHING A SIDE	1
3	MA-16820-TOOL-BUSHINGB	3D PRINTED BUSHING B SIDE	1
4	95893A621	Flat Head Thread-Forming Screws for Plastic	4
5	MA-16820-TOOL-GRIPA	3D PRINTED PETG/TPU/PLA FDM GRIP A SIDE	1
6	MA-16820-TOOL-GRIPB	3D PRINTED PETG/TPU/PLA FDM GRIP B SIDE	1
7	99512A672	Torx Rounded Head Thread-Forming Screws	3



- NOTES:
- 3D PRINT BUSHINGS IN DURABLE TOUGH MATERIAL WITH PRECISION SETTINGS AT 100% INFILL.
  - 3D PRINT HANDLE HOWEVER YOU CHOOSE, WE PREFER TPU.
  - LASER #1 OUT OF 4130 CHROMOLY STEEL WITH PROVIDED FLAT PATTERN AT A VENDOR OF YOUR CHOOSING.
  - FILE OR DREMEL THE AREAS THAT ENGAGE THE BARREL NUT PRIOR TO AFFIXING THE BUSHINGS #2.
  - HARDWARE PART NUMBERS ARE ALL MCMASTER.COM



UNLESS OTHERWISE SPECIFIED:		NAME	DATE	WRAITHWORKS	
DIMENSIONS ARE IN INCHES		DRAWN	JG	4/25/22	TITLE: <b>WARSCORP9/WARP15 BARREL NUT TOOL HAND WRENCH TYPE</b>
TOLERANCES:		CHECKED			
FRACTIONAL ±1/32 IN.		ENG APPR.			
ANGULAR: MACH ±1 BEND ±1		MFG APPR.			
TWO PLACE DECIMAL ±0.010		Q.A.			SIZE <b>B</b>
THREE PLACE DECIMAL ±0.002		COMMENTS:			
FOUR PLACE DECIMAL ±0.0005					DWG. NO. WW-BARREL-NUT-HAND-TOOL
INTERPRET GEOMETRIC TOLERANCING PER: 3D MODEL					REV <b>A</b>
MATERIAL VARIES					SCALE: 1:1
FINISH VARIES					WEIGHT:
DO NOT SCALE DRAWING					SHEET 6 OF 12

